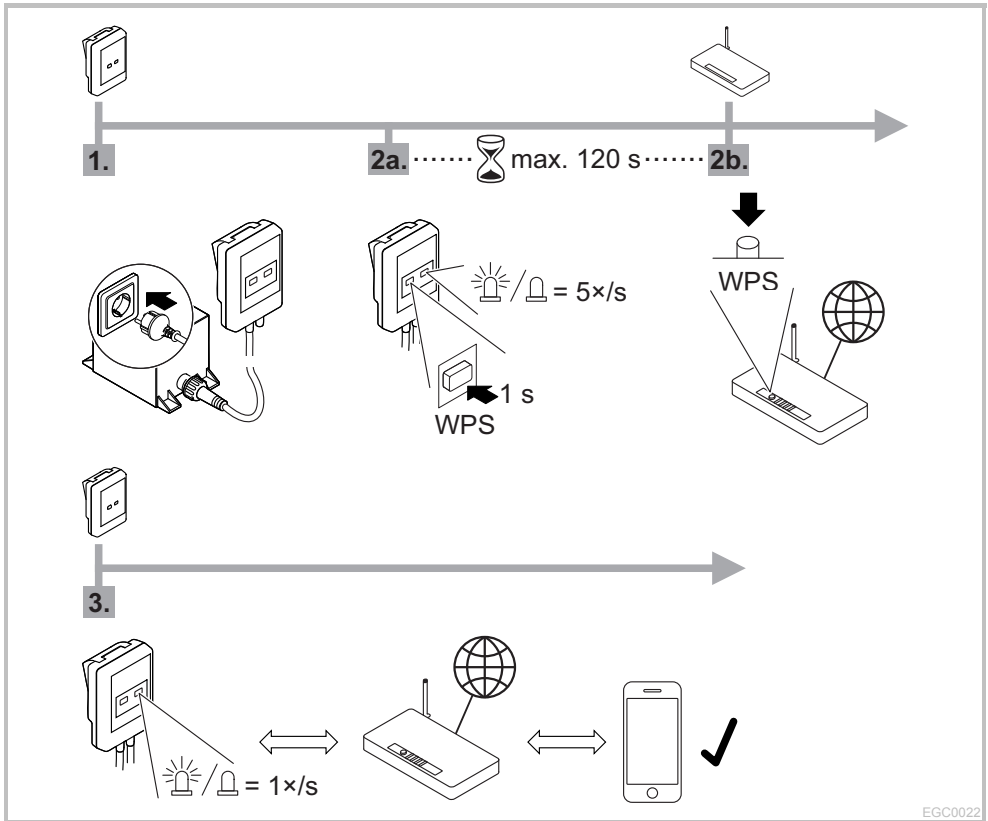
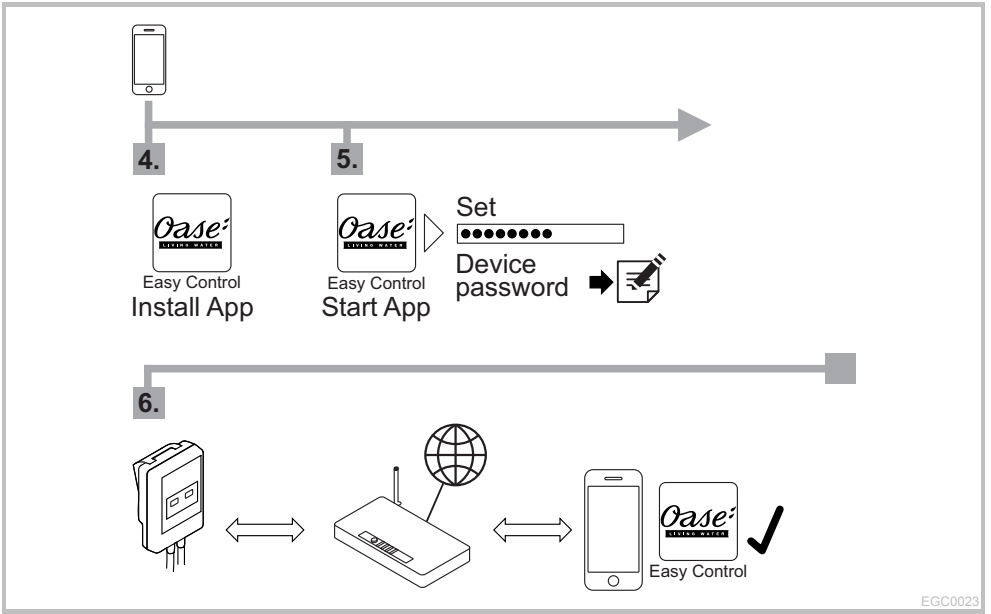


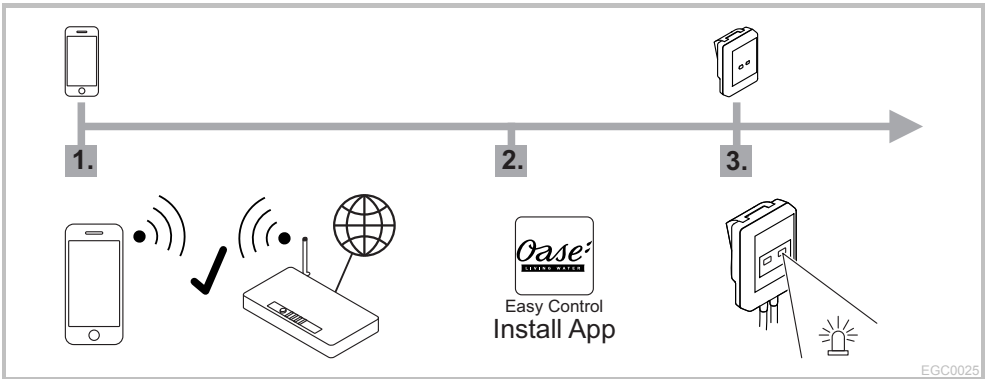
Quick Start InScenio EGC Controller

A1 – Wi-Fi connection: via WPS





A2 – Wi-Fi connection: manually





4.



Wi-Fi settings
SSID = ①
Password = ②

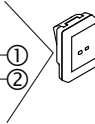
SN: 1234567898765432

EGC Controller Version: V1.0

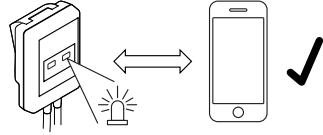
Default Firmware: V01.01

SSID: Oase EGC Controller xxxxxx

Password: oase1234



5.

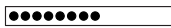


6.



Easy Control
Start App

Set



Device
password



7.



Easy Control



Router/Cloud

WPS → A1 / 2b.

MANUAL CONNECTION → SSID

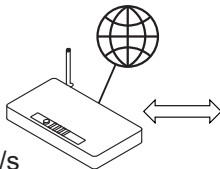
Password



8.



1x/s



Easy Control



B – InScenio EGC Controller Cloud: Cloud connection

