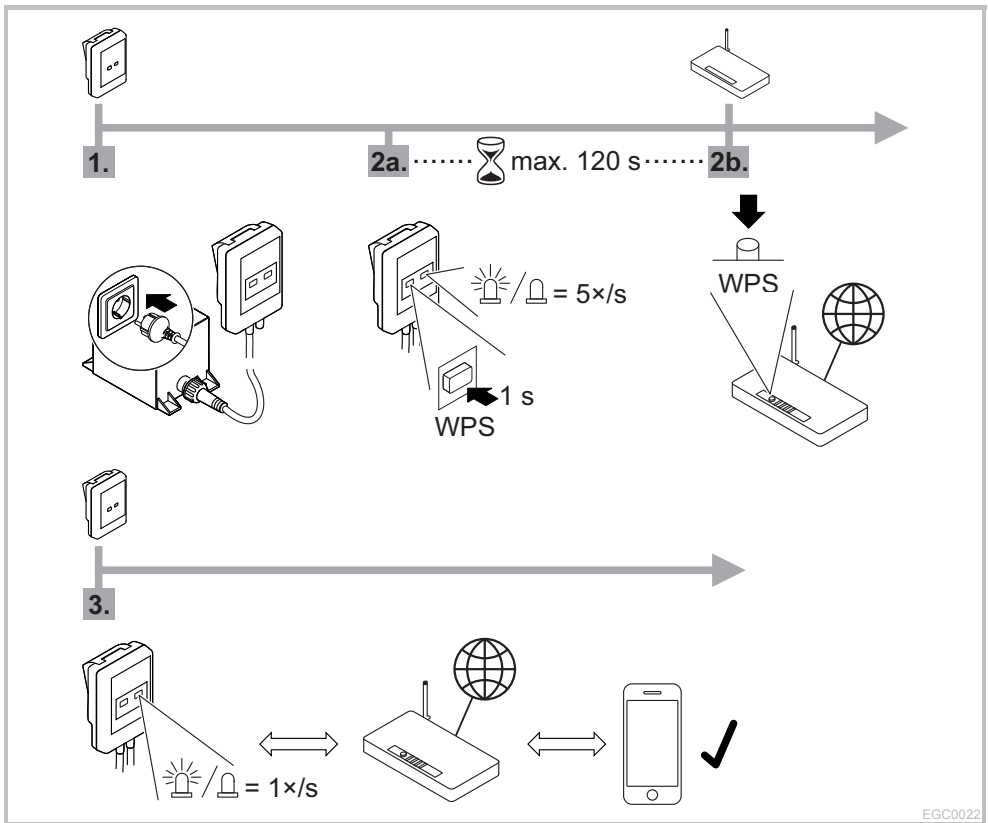
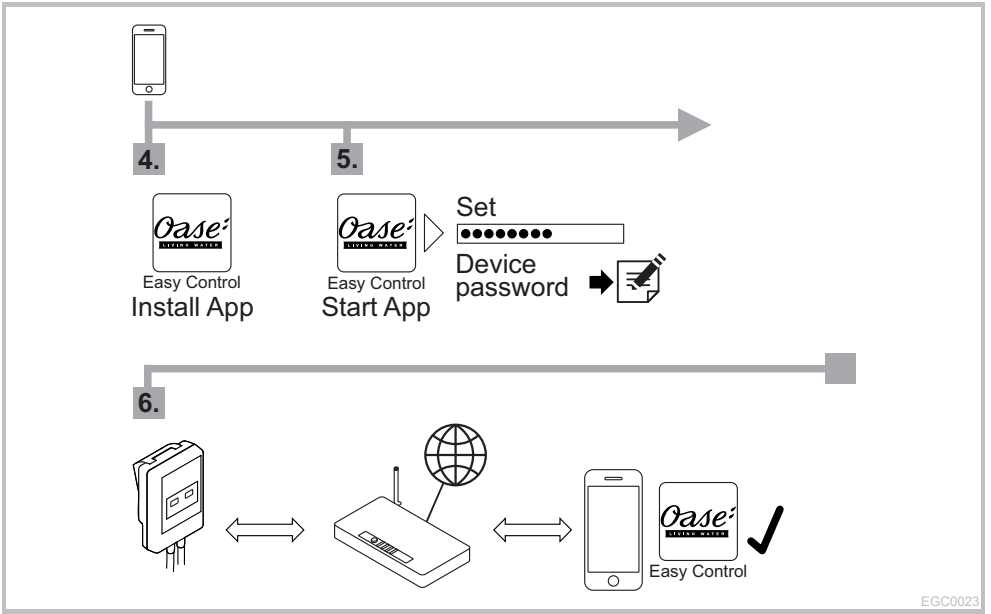


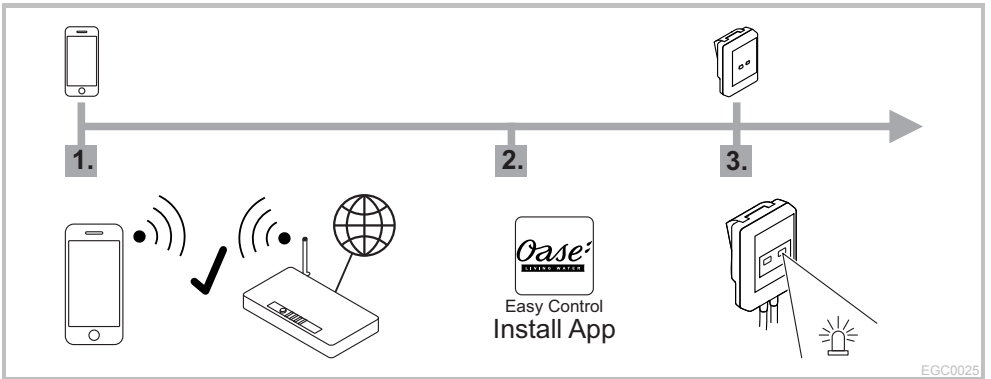
Quick Start InScenio EGC Controller

A1 – Wi-Fi connection: via WPS





A2 – Wi-Fi connection: manually





4.



Wi-Fi settings
SSID = ①
Password = ②

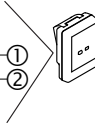
SN: 1234567898765432

EGC Controller Version: V1.0

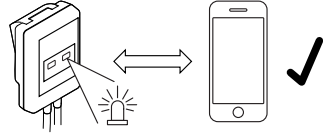
Default Firmware: V01.01

SSID: Oase EGC Controller xxxxxx

Password: oase1234



5.



6.



Easy Control
Start App

Set



Device password



7.



Easy Control



Router/Cloud

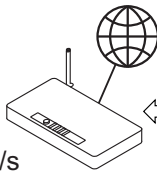
WPS → A1 / 2b.

MANUAL CONNECTION → SSID

Password



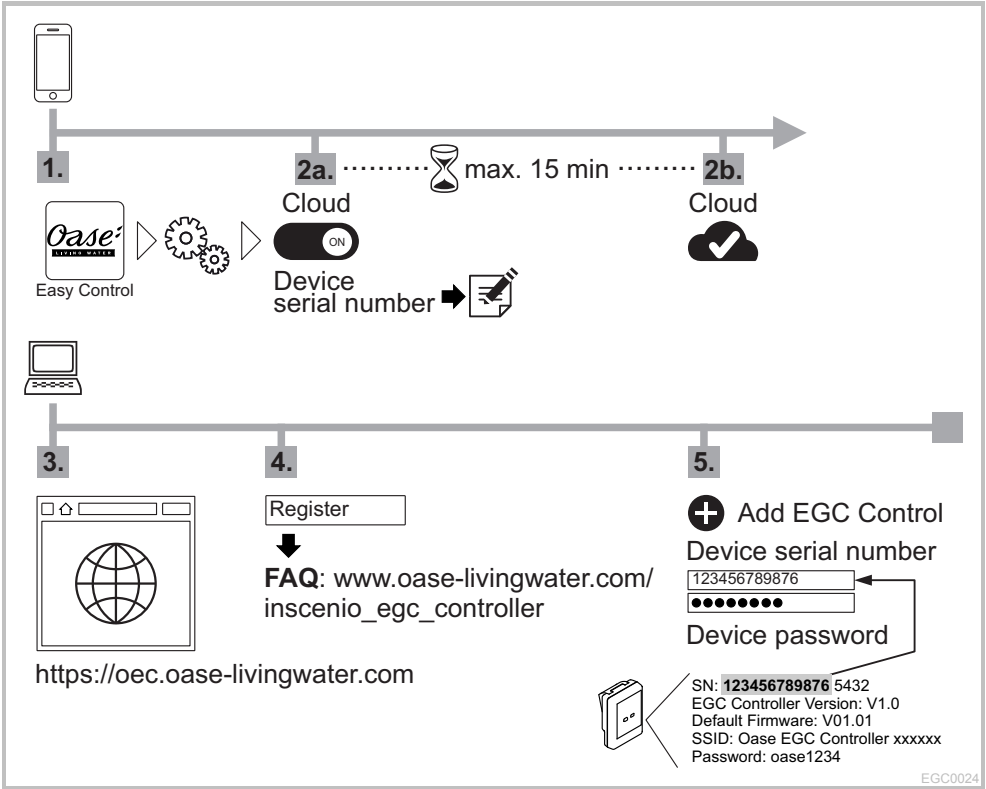
8.



Easy Control



B – InScenio EGC Controller Cloud: Cloud connection



Device serial number _____

Device password _____

E-Mail _____

Password _____

EGC0027