

OASE GmbH
 Tecklenburger Straße 161
 D - 48477 Hörstel
 Phone: +49(0)54 54 – 800
 Fax: +49(0)54 54 – 80 322
 info@oase-livingwater.com
 www.oase-livingwater.com

EWR 1

51554

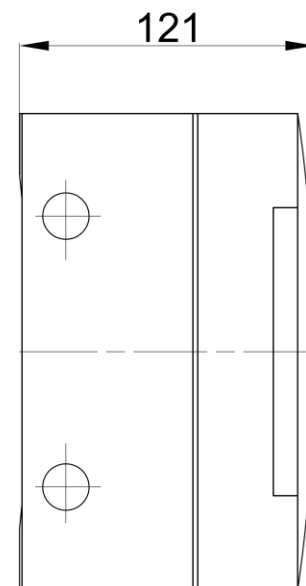
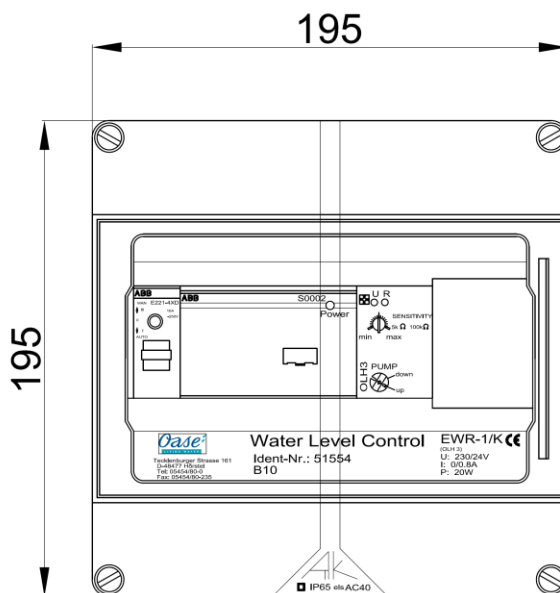


Product characteristics at a glance

- For electronically monitoring the water level
- Automatic top-up infeed of pool water
- Automatic switch off of pump technology when using water-level sensors incl. dry-run protection electrode

Produkteigenschaften auf einen Blick

- Zur elektronischen Überwachung des Wasserspiegels
- Automatische Nachspeisung des Beckenwassers
- Automatische Abschaltung der Pumpentechnik in Verwendung mit Wasserstandssensoren inkl. Trockenlaufschutzelektrode



Electronic water-level regulator		EWR 1
Dimensions (LxWxH)	[mm]	180 x 180 x 124
Housing		plastic
Protection class		IP 54
Voltage	[V / Hz]	230 / 50
Output power		
Solenoid valve	[V / Hz]	230 / 50
	[A]	5.0
Solenoid valve	[V / DC]	24
	[A]	0.5
Pump	[V]	230 / 50
	[A]	5.0
Switch/Button		1
Indicator lights		1
Connections for electrodes		3
Dry-run protection		no
Alarm monitoring		no
Weight	[kg]	2.1
Order no.		51554

Elektronische Wasserstandsregler		EWR 1
Abmessungen (LxBxH)	[mm]	180 x 180 x 124
Gehäuse		Kunststoff
Schutzart		IP 54
Spannung	[V / Hz]	230 / 50
Ausgangsleistung		
Magnetventil	[V / Hz]	230 / 50
	[A]	5,0
Magnetventil	[V / DC]	24
	[A]	0,5
Pumpe	[V]	230 / 50
	[A]	5,0
Schalter/Taster		1 Stück
Leuchtmelder		1 Stück
Anschlüsse f. Elektroden		3 Stück
Trockenlaufschutz		nein
Alarmüberwachung		nein
Gewicht	[kg]	2,1
Bestell-Nr.		51554

The information contained in this data sheet is the sole property of OASE GmbH. Any reproduction in part or as a whole without the written permission of OASE GmbH is prohibited.